

BARUNG

LANDCARE NEWS

July - September

2014



Barung Resource Centre

38A Coral Street

PO Box 1074

MALENY Q 4552

Mon to Fri: 9 am - 4 pm

07 5494 3151

info@barunglandcare.org.au

Barung Nurseries

0429 943 152

nursery@barunglandcare.org.au

Retail:

Porters Lane NORTH MALENY

WED to FRI: 9 am - 3 pm

SAT: 9 am - 12 noon

Wholesale:

65 Amigh Rd LANDSBOROUGH

By appointment



WORKING FOR OUR FUTURE

www.barunglandcare.org.au



Barung office moves to street-front position in Coral Street Maleny.

New, Bigger Barung Office!

by Eric Anderson

It's not a very well kept secret, but in any case, I'm delighted to announce that Barung is moving up in the world - well at least our office accommodation is improving. We have been extremely fortunate to be able to move from our very small room in the Hinterland Business Centre to front of house, so to speak, to occupy the rooms that have housed Maleny Art Supplies for several years.

It is a great street-front location, still at Hinterland Business Centre 38A Coral Street, but one where everybody will be able to see, find and visit the office easily. We are extremely grateful to Edith-Ann Murray, Manager of the Hinterland

Business Centre, for providing us with the opportunity to occupy this space that is being vacated by Maleny Art Supplies. The Art Supply business will now become a part of Holden's Gallery next door.

The move will allow us to better house our Administrative Staff and serve the community with a well stocked Resource Centre. We will again be able to display a large range of useful, natural resource, management material to better inform our members and the public. We anticipate occupying the new office by Monday 28th July 2014. Please do come and visit!

Carol Keane and Edith-Ann Murray of Maleny Art Supplies, and Barung President, Eric Anderson are all delighted with the move.

First Walk on the Wild Side

by Raine See

On Saturday June 7, a group of 27 'Walkers on the Wild Side' ventured off on a foray into nature at Mary Cairncross Park. Ranging from 'almost new' to 'retired', all enjoyed the walk immensely. The children loved finding lots of seeds including fig and black bean, which were prolific along the edge of the track. The interesting shapes of the fungi caught their attention, as well as a couple of fallen trees showing just how shallow-rooted many rainforest trees are. One tree had a hole in it and what looked like an egg inside, which was the source of lengthy discussions as to what it might be. Three pademelons (as distinct from watermelons) came out to see who we were. The whipbirds entertained us, as did some small scrub wrens.



(continued page 9)

President's Report

by Eric Anderson

Thanks to the many sponsors, exhibitors, volunteers, the terrific weather and the great attendance (some 9,000 attendees) we had a record 18th Wood Expo. The net profit from the Expo is important for Barung's continuing operations. However, as important, is the contribution that is made to local groups that participate and local businesses that benefit from the influx of visitors. An independent survey revealed that 51% of the visitors came from Brisbane and 24% from the Sunshine Coast. Only 11% of the visitors were from Maleny and surrounds.

Successful Wood Expos, a profitable Contracting business and Community Partnership Funding from the Sunshine Coast Council are essential for the continuing operation of Barung. The funding environment becomes more difficult when the Federal Dept of Agriculture announces that it won't be allocating any new direct funding for community Landcare Groups over the next four years (see p. 10). In the recent budget, the Federal Government slashed half a billion dollars from the National Landcare Program. For more details see - <http://www.abc.net.au/news/2014-05-30/landcare-grants-no-money/5488998>

Congratulations to the team that launched our new Gardens for Wildlife program on 29th May. Some 84 people came to Miriam and Paul Barnes' garden to hear about the program and be introduced to 'the practicalities of establishing a garden for wildlife', by guest speaker Dr Nita Lester. Encouragingly, 52 people signed up on the day to participate in the program. Contact our Office or look at our website if you want more details about this program. Congratulations to Lorraine See, Martina Gordon and Janet Hamilton - all members of Barung Landcare Association - who

have started the Group 'Walks on the Wild Side'. Their vision is to connect people, especially children, with nature. Barung is pleased to auspice the group in order to provide them with insurance cover during their excursions. See details of their first excursion on the front page, continued on page 9.

The Committee has worked hard this year to review Barung's operations in order to provide a more secure future. Some of the changes now emerging, are the new structure of membership fees revealed for the first time in this Newsletter (p. 5), an imminent move (see front page) from our current, small, cramped office in the Hinterland Business Centre to the spacious rooms at the front, and a reorganisation of our Contracting Services team, precipitated by the stepping down of current Manager, Matt Bateman, who is having a rest, and Team Leader, Kate Brooks who has just given birth to a baby boy. We welcome their replacements, Luke McWilliam and Brenton Schwab. Full details of the restructure



Farewell and thanks to Contracting Services Manager, Matt Bateman.

of Contracting Services will appear in the next Newsletter. We sincerely thank Matt for his enormous contribution to Barung over the last seven years – a job very well done.

Finally, the last change, is to welcome a new Committee member, Sue Brischke, who joins us at our next Committee meeting on Tuesday 15th July.

Hinterland Bush Links EVENTS

First Friday of each month (1 July, 1 Aug, 5 Sept)

Little Yabba Bushcare - Little Yabba Park, Cambroon in the Mary Valley 8 am - 11 am

Vegetation restoration along the banks of Little Yabba Creek, followed by a cuppa and a short bushwalk nearby.

Fri 11 July - Roving Restorers

The Book Farm, Reesville 9 am - 12 pm

Join us for a shady morning weeding out privet at this beautiful property in the headwaters of the Obi Creek. Morning tea provided. We'll visit the rainforest which protects Angle-headed dragons and other wonderful wildlife. Car pool at Maleny IGA carpark at 8.30 am or travel independently for a 9 am start.

Mon 28 July - Roving Restorers

Burgess Lane, Maleny 9 am - 12 pm

Join us in hand-weeding Madeira Vine at this beautiful property near Mary Cairncross Reserve. The restoration work here contributes to a wildlife corridor between the reserve and the Obi Ck. Morning tea provided. Car pool from Maleny IGA carpark at 8.30 am or travel independently for 9 am start.

Sat 9 Aug - Roving Restorers

Burgum Rd, North Maleny 9 am - 12 pm

Join us to hand-weed Madeira and other vines at

this property on a beautiful stretch of the Obi Creek.

Morning tea provided. Car pool at Maleny IGA carpark at 8.30 am or travel independently for a 9 am start.

Mon 1 Sept - Creating wildlife habitat in your backyard. Treehaven Way, Maleny 9 am - 12 noon Free. A Gardens for Wildlife/HBL workshop in Landcare Week.

Find out how to attract a diverse array of wildlife to a suburban backyard, from Rose Robins to the rare Three-toed Snake-tooth Skink. Morning tea provided. Please register for full address details.

Saturday 13 Sept - Bushcare's Major Day Out

Crystal Waters, Kilcoy Lane, Conondale 9 am - 2 pm

Join us for Bushcare's Major Day Out – an exciting national event to engage communities in local bush restoration. We will be doing a morning of planting and weeding activities to enhance restoration works already underway on the Mary River. This will be followed by a cuppa and cake and a guided walk along the river. Car pool from Maleny IGA carpark at 8.15 am or travel independently for 9 am start.

For all outdoor events: All tools are provided. Please bring gloves, water, boots, insect repellent and sunscreen. Long-sleeved shirt, trousers and hat are essential (Work Place Health and Safety Regulations).

For enquiries and directions please contact Susie Duncan
Ph: 5429 6622 E: sduncan@hinterlandbushlinks.org
Further Details: www.hinterlandbushlinks.org

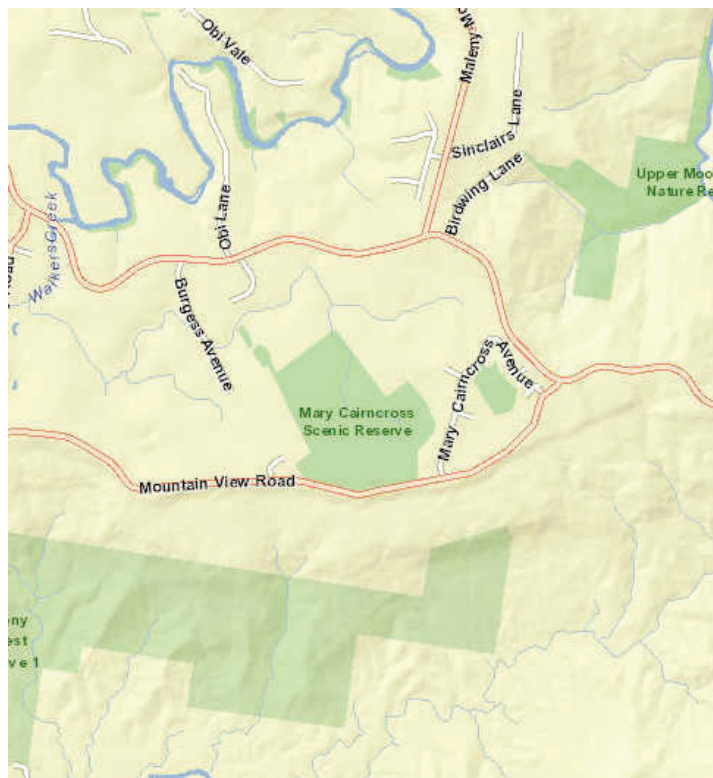
Please register with Barung Landcare Ph. 5494 3151

www.barunglandcare.org.au



Connecting Mary Cairncross Scenic Reserve

by Susie Duncan, HBL Coordinator



Road map of the area surrounding Mary Cairncross Scenic Reserve.

We all love the tall, luxuriant rainforest at Mary Cairncross Scenic Reserve, east of Maleny. So too does a magnificent array of native wildlife including our only local bird of paradise, the iridescent Paradise Riflebird, and the stunning black and gold Regent Bowerbird. More familiar to most people however are the bold, little Red-legged Pademelons which hop around on the rainforest floor, foraging for fallen fruit and leaves. What a treat it is to see them at close range.

Equally magnificent rainforests were once widespread on the rich volcanic soils of the Blackall Range, but have been cleared for timber and farming over the last century. We are fortunate to have this remnant of mature rainforest to guide us in restoring vegetation locally and to protect the precious native plants and animals that live there.

However, an isolated reserve can only do so much to sustain populations of this rich collection of native animals and plants. I was relieved to hear some years ago, that the Red-legged Pademelons in the reserve haven't become highly in-bred, suggesting that they were skipping across the road to the forest on the escarpment below Mountain View Road. But this habitat connection is still tenuous and ideally a broad swathe of vegetation would link Mary Cairncross to the National Park on the escarpment to ensure passage for all the species in the reserve.



Aerial view of the area surrounding Mary Cairncross Scenic Reserve. (maps: Google)

If we look to the north of Mary Cairncross we see a mix of peri-urban and urban properties, some of which have been carefully restored with the rainforest vegetation that once occurred there. One garden in Thynne Court hosts many of the animals found in Mary Cairncross, including Wompoo Fruit-doves and Richmond Birdwing butterflies. This is thanks to the garden's proximity to the reserve as well as the efforts of the owner to provide suitable habitat. With the involvement of other landholders north of Mary Cairncross, there is wonderful scope for creating a broad wildlife corridor through to the Obi Creek.

To the north-east of Mary Cairncross there is also a great opportunity to enhance the habitat value of properties that link through to reserved forested land in the Upper Mooloolah River catchment. Creating these habitat connections, is critical to the long-term survival of native plants and animals in the Mary Cairncross Scenic Reserve, by providing safe passage for wildlife and the rainforest seed they disperse.

If you live anywhere in the vicinity of this wonderful reserve, you can play a part in creating habitat connections that will ensure a future for all the species that dwell there. For further advice or assistance, you can join up to Gardens for Wildlife through Barung Landcare or contact Hinterland Bush Links: sduncan@hinterlandbushlinks.org

Keep an eye on the Barung website for upcoming events and new features:
www.barunglandcare.org.au

Activity @ Porters Lane

NURSERY NOTES by Fuschia Collard

Well it's almost here again folks - The Qld Garden Expo at the Nambour Showgrounds Friday 11th to Sunday 13th July 2014 - for everything you could ever want for your garden and more.

Barung is pleased to be included again in the Sunshine Coast Regional Council area called 'Living Backyards'. You will find wildlife-attracting, themed pots and bags, for sale plus a few extras. Thanks to Ruth (volunteer at Landsborough Nursery) and the team, for all the preparation that goes into getting to this big event. It is a wonderful weekend, always with plenty to see and learn, so get set, and go!!

Nursery Tent at 2014 Wood Expo.
(Photo: Den Lalor)

It was a great Maleny Wood Expo weekend in May! Thank you to everyone who visited the Barung Nursery Tent where over \$5000 worth of plants and over \$2000 worth of books were sold! A huge thank you to set-up and pull-down teams, including Stephen Williamson, Shane Dean, Alan Felmingham, Peter Atherden, Ruth & Doug Blanch, Eric Anderson, Diana O'Connor and to stall volunteers, John & Joan Dillon, Daryl Reinke, Craig Hosmer, Ian Webster, Dianne Lanske, Bob Philpot, Fran Guard, Sally Watter, Leisa Gunton, Pam Owens, Paddy Parr, and Gretchen Evans. I love how our community comes together



Many thanks to John Carrigy and Meryl Marshall for their donation of a plant rack which will enhance the display area in the Porter's Lane Nursery.

to put on such a magnificent event. We always receive wonderful feedback about how friendly and well organised it is. I hope you all felt as proud as I did.

How do you like our new Nursery sign? We are so fortunate to have our own, resident artist, Leisa Gunton, currently volunteering at Porters Lane. A lot of talent and thought went into creating this beautiful sign. Thank you Leisa! We are sooooo grateful and I hope to see your artwork on Barung t-shirts one day!!



Leisa Gunton, created the beautiful new sign for Porters Lane Nursery.
(Photo: Fuschia Collard)

Just a reminder to our first 150 Gardens for Wildlife members, you can collect your sign, folder, 10 free trees, tree guards and bale of mulch hay from Porters Lane during opening hours: Wednesday – Friday 9 am – 3 pm and Saturday 9 am – 12 noon. Most of the lower growing plants are on the right hand side of the shade house as you walk in. If you haven't signed up yet, feel free to call in and join. There is a one-off joining fee of \$30 (\$25 for Barung members). Hope to see you soon!

Guioa semiglauca - Guioa or Wild Quince Family: Sapindaceae

PLANT PROFILE by Paul Barnes

Guioa semiglauca known as Guioa or Wild Quince, is a small tree of 6-15 metres found in most types of rainforest, from Batemans Bay south of Sydney to the Eungella Range near Mackay in north Queensland. It often grows near creeks and is particularly common in regenerating rainforest.

The trunk is flanged, fluted or channelled at the base in large trees and the bark is smooth grey or slate coloured, often spotted. Interestingly, the bark contains a saponin or soap-like substance which was used by Aborigines as a fish poison. The wood is pinkish,



Guioa is in plentiful supply at the Nursery now.
(Photo: Fuschia Collard)

close-grained and tough, possibly suitable for tool handles, but generally too small to be of value. Trees tend to grow multiple trunks which can be brittle and damaged in severe storms.

The leaves are alternate, pinnate with two to six ovate to oblong alternate leaflets, about 5-10 cm long. Leaflet stalks are 1.5-3 mm long with the upper surface of the leaves green and smooth or occasionally hairy and the underside pale or grey.

Small yellow-green flowers occur in dense bunches in spring every few years, followed from January to May, by clusters of three-lobed, flattened capsules up to 12 mm wide, containing a 6 mm diameter black seed fully enclosed in acid-juicy, yellow arils.

The fruit is ripe January to May and attracts a range of fruit-eating birds such as King Parrot, Eastern Rosella, Figbird, Lewin's Honeyeater, Olive-backed Oriole, Pied Currawong and Varied Triller. Many of these will deposit seeds of other rainforest plants, assisting in regeneration. For rapid germination, seed should be fresh, soaked overnight to drown insects, and then removed from the capsules.

This tree is very useful as a quick-growing and early fruiting pioneer, for rainforest regeneration plots including creek banks and frost prone areas. It is not specifically recommended for edges and other high wind areas.

In the garden, this is a useful quick-growing and bird-attracting, small tree best planted in company with other quick-growing species where it will assist in, achieving a canopy quickly and attracting colourful and attractive fruit-eating birds.



Guioa is fast growing and attracts birds.
(Photo: Ian Webster)

Proposed New Barung Membership Structure

by Lindsay Kruger

To better address the needs of members and to meet Barung Landcare's mission, a new membership structure offering more options has been proposed.

The proposal includes options for one-year and three-year memberships, for both individuals and families as well as options for businesses and community groups.

You can also recoup payments on your membership fee, by taking advantage of the discounts offered by various local businesses supporting Barung Landcare.

As government grants become more scarce, it is important for Barung to be more imaginative in how we engage with our community to sustain our environmental activities.

*A nominated property within Barung Landcare's designated region. Property Visit: to take place within Barung Landcare's designated geographic region.

**Membership for Life: This level of membership is to be in the name of an individual member and resides with that person i.e. it is not transferable. The member's spouse, shares their membership rights.

MISSION STATEMENT: Barung Landcare is a leading community-based organisation working to develop ethical solutions for a sustainable future. We support local and regional community empowerment to conserve and enhance the rich diversity of natural resources of the Blackall Range and environs.

Membership Type & Benefits	Free trees/year	Plant Discount	Business Discounts	Newsletter	Property Visit	Wood Expo Discount	Discounted Workshops	Voting Rights AGM
Quandong \$1,000 Membership for Life** Entitles family participation	20	Wholesale Price	√	√ emailed	2 *	free	2 per yr free	2
Booyong 4 yrs \$350 (Individual)	15	20%	√	√ emailed	1 *	√	1 per yr free	1
Individual 3 yrs \$90	2	10%	√	√ emailed		√	√	1
Individual 1 yr \$35	2	10%	√	√ emailed		√	√	1
Family 3 yrs \$150	4	10%	√	√ emailed		√	√	2
Family 1 yr \$55	4	10%	√	√ emailed		√	√	2
Business 1 yr \$100	4	10%	√	√ emailed		1	1	1
Community Group 1 yr \$35		Wholesale price	1	√ emailed		1	1	1
Associate 3 yrs \$25				√ emailed				
Associate 1 yr \$10				√ emailed				

A Parasol Fungus - *Macrolepiota dolichaula*

FUNGAL FORAY by Gretchen Evans

After weeks and weeks of drought, many folk on the Range had about 300 mm of rain over two days. This resulted in many enquiries about large, white, spectacular fungi which appeared on lawns and pastures. These belong to the genus *Macrolepiota* and were most probably *M. dolichaula* although there is a couple of different species which look similar and would need confirming by checking the spores.

Macrolepiota dolichaula grows up to 20 cm in height.



Macrolepiota, sometimes called the Parasol Fungus, is a tall (up to 20 cm), white fungus which is quite spectacular. The cap is covered in a ring of small scales and often has a fringed margin. The stem has a swollen base and there is a ring on the stem which can be moved up and down, with care. It is common in warm temperate and eastern tropical regions of Australia.

A ring on the stem moves up and down. (Photos: Fran Guard)

2014 Maleny Wood Expo - another great event!

by Steve McLeish



Keith Gall's chainsaw sculpture - Beautifully rustic, hand-made Banjo and bench.
now at Maleny Credit Union.

Saturday 3rd May dawned clear and sunny for the 18th Maleny Wood Expo.

Over 7,000 visitors (around 9,000 attendees including children, registered volunteers, stall holders) flocked to the Showgrounds during the weekend, keeping the army of volunteers on their toes, especially the parking crew. Survey results once again awarded our volunteer army the highest accolades for their friendly attitude and helpfulness to visitors.

Many of our exhibitors at this year's Expo reported great sales over the weekend – the sign of a truly successful show.

There was a 10% increase in visitors on last year due largely to Mim Coulstock and her excellent marketing campaign. I would like to say a special thank you to Mim for her dedication to the Expo and for her mentoring over the years.

The kids' workshops and activities were a hit this year with many new additions including 'kids working with wood' workshops sponsored by Carba-tec, who have indicated that these workshops were such a great success, they would like to expand the idea for next year.

Other successful additions were, the 'Woodworking for Women' workshops hosted by Pat Gregory and the 'Tall Timber Tours'

Thanks to Wonderful Expo Veggies & Supporters

by Jonathan Waites

The 2014 Maleny Wood Expo was our biggest for some time with record crowds and high levels of satisfaction amongst visitors and stallholders. This kept our 170 plus, volunteers busy supporting Barung's major fundraising event for the year.

Thanks to those of you who filled out our short feedback form after your shift about your volunteering experience this year. If you didn't get to fill out a form and would like to provide us with some feedback to improve future volunteering experiences or ideas about making the Wood Expo a better event, please go to the Barung website <http://barunglandcare.org.au/volunteering> and fill out the Volunteer Feedback form. Thanks once again to all. We would like to have listed the names of all of the volunteers, but 170 plus, names just wouldn't fit! Hope to see you again next year. Cheers!

with Ashley Sewell. We had planned to run one tour with Ashley, but due to popular demand we were able to fill a second. Many people asked if Barung were going to run these tours during the year - food for thought!

The 'Tool Shed' was expanded this year due to the increase in tool sellers wanting to exhibit at the Expo. The feedback I have received, indicates that this area will grow even further next year.

The Barung Nursery Tent looked magnificent. All Nursery staff and volunteers are to be congratulated on the quality and variety of species available.

Many thanks to Marrissee and her crew for their incredible operational success with the Barung BBQ. The food and service was great. It was by far the most popular food outlet on site.

Thanks also to Sue, Emma and Di for coordinating and operating the Barung Coffee stall.

The Maleny Music Stage drew crowds. With its generous seating and table area, this was the place to sit back and take it all in. There has been much feedback about the quality of our Maleny Musicians which makes me swell with pride.

Congratulations to Jono for organising the volunteers, to Lorraine and Martina for overseeing the raffle and thanks to all involved during set-up and pull-down.

Many thanks to Lindsay for coordinating the parking. This is never an easy task and with the increasing numbers of visitors, it is becoming more complex. Wonderful job Lindsay!

Without everyone's input, the Expo would not be possible. Enabling other groups to benefit from the fundraising opportunity is part of the Expo's charter and Barung is delighted to be able to support our local community in this way.



There was a 10% overall increase in attendance and profitability at the 2014 Wood Expo, over last year.



Barung Contracting Services

revegetation
bush regeneration
landscape rehabilitation
environmental weed control
project planning & management
consultancy & property planning

contracting services 0429 943 156
contracting@barunglandcare.org.au

2014 Wootha Prize 'Open & Shut' Winners

by Mim Coulstock

The 2014 Wootha Prize exhibition, themed 'Open & Shut', was viewed by thousands of visitors at the recent Maleny Wood Expo.

Judges Ross Annals, George Gavaric and Carol Russell awarded the First Prize of \$2,500 to Gary Fields from Alexandra Hills for his piece 'Tribute to Reclamation', hand carved from a Red cedar burl and inlaid with recycled silver. Gary was also honoured with the Design Excellence Award for his sensitive use of the timber in conjunction with his theme interpretation.

Frank Van Brunschot of Geebung received Second Prize of \$750 plus the Craftsmanship Award for his intricate 'Collector's Cabinet', constructed from Tasmanian Blackwood, Camphor laurel, Casuarina, Eucalyptus burl, Western Red cedar, Victorian ash, Silky oak and Huon Pine.

Third Prize of \$500 was awarded to Richard Vaughan of Sumner Park for his 'Open & Shut Ring Box'. The outer box, constructed of salvaged Red cedar, housed an inner Silver Quandong box



(L to R) Judges, George Gavaric, Carol Russell, Ross Annals with Frank Van Brunschot, Richard Vaughan and Gary Field.

lined with kangaroo leather with handles made from bunya nuts.

Over 1,000 Expo visitors cast their votes for the People's Choice Award, selecting Maleny's Jack Wilms' hand-carved Red Cedar 'Mermaid's Treasure Box' as the recipient of the \$500 prize.

Many thanks to sponsors HQ Plantations who sponsored First Prize and the People's Choice Award, Queensland Water and Land Carers for sponsoring Second Prize and Geochempet for sponsoring Third Prize.

Thank you also to our volunteer judges, to Claire Booth for her excellent Mistress of Ceremonies skills, and to all of the volunteers who contributed to making the opening such a success.

Many thanks to: Rob Brieschke and Corrie Wright for their help setting up the Expo Wootha exhibition; to Boris Daniljchenko for photographing the work; and to Gary Myers Art Gallery, Maleny for hosting the post-Expo exhibition.

The theme for the 2015 Wootha Prize is 'Planting the Seed'. Application forms are available at www.malenywoodexpo.com. Like all Maleny Wood Expo exhibitors, entrants in the Wootha Prize must use sustainably sourced timbers – either plantation grown, recycled, salvaged or weed timbers.



1st prize - Gary Fields' 'Tribute to Reclamation'.



2nd - Frank Van Brunschot's superb 'Collector's Cabinet'.



3rd - Richard Vaughan's 'Open & Shut Ring Box'.



People's Choice - Jack Wilms' 'Mermaid's Treasure Box'.

Barung's Maleny Wood Expo Monster Raffle 2014

by Martina Gordon

Although we didn't actually raffle any monsters ...we did have some fabulous prizes, all donated by the unbelievably generous community of Maleny, the Blackall Range and Wood Expo participants.

The first prize winner of the Carba-tec hamper of beginner wood-working tools, David Harding, was over the moon; not only had he won such a fabulous prize, but it was his birthday as well!! The day he picked it up, he was just so happy. Lots of negative things had happened recently in his life and he felt that as this was just such a wonderful surprise, his luck had totally turned around and was on the 'up and up'. Congratulations David!

A couple of the winning tickets had been bought at the expo, one at dancing, some online and others when accosted on the streets of Maleny!!



1st and 2nd Prize winners - David Harding with his Carba-tec beginner woodworking kit and Victor with his Brushcutter.

The second prize, the brushcutter donated by Maleny Mowers, went to Victor, who lives on a house block in Brisbane. Luckily, they are hoping to move to Maleny in 18 months or so when it will be very handy and he's going to have one very trim garden in the meantime!



Richard Knight's gorgeous milking stool went to lovely Grace, who does a lot of dancing who was just so excited to have won!!!

Thanks everyone who bought tickets – you never know when it's going to be your lucky day, and if not, you're donating to a good cause in any case!

Congratulations to all the delighted winners; thanks again to all the fantastic donors of prizes that made this raffle so outstanding; and thanks to the wonderful team of ticket sellers who sold tickets tirelessly, enthusiastically and always with a smile!

Gardens for Wildlife Program Launch

by Joan Dillon

Gardens for Wildlife was launched in perfect weather on May 24th in Paul Barnes' Maleny garden. Over 80 enthusiastic gardeners attended, which demonstrated that there are many gardeners out there who would love to share their gardens with the local wildlife, but may not be sure of how to go about it.

Dr Nita Lester spoke about the practicalities of establishing a wildlife-friendly garden, emphasising the need for water, shelter and habitat and of course local food supplies which include nectar, insects and fruit – a balanced diet. Such was the interest, that 52 gardeners joined up on the day, receiving the lovely sign featuring a red-backed wren and a folder containing useful notes and informative leaflets, which will be added to progressively.

The Barnes' garden is large and well established but it was emphasised that any garden can attract wildlife, providing it is designed for the birds and other critters as well as for the owners. We have many locally native plants that serve as colourful ground covers, shrubs and small to medium trees.

More members have been recruited since the launch and Barung looks forward to conducting workshops



More than 80 Hinterland residents attended the Gardens for Wildlife Launch (photo: Susie Duncan)



Wildlife gardeners receive this sign.

and garden visits as the year progresses. Check the Barung website www.barunglandcare.org.au for announcements as the program is developed.

How to Develop a Garden that will Attract Wildlife: PART 1

by Dr Nita C. Lester

Proposition: Every garden space can become wildlife friendly.

Questions to ask: When considering your current garden design, does it fulfil your needs? Would it fulfil the needs of the wildlife such as invertebrates, amphibians, reptiles and mammals? What do wildlife species need?

If you are willing to review your current garden design so as to provide shelter, food and water, what will a wildlife friendly garden look like, feel like and sound like?

Looks like: Many of us live in highly urbanised areas, may



Layering your plants - Phillip and Nita C. Lester's garden at Mapleton. (photos: Phillip S. Lester)

be renting with only a small garden, courtyard or balcony or you may have a larger property. The good news is you don't have to have tall trees to attract wildlife.

A wildlife garden is 'informal' compared with 'formal' designs after the European styles. No matter how small or large your garden space is, an 'informal' design is possible, providing corners and places that afford shelter and protection for wildlife

1. For small spaces, pot locally occurring species and clump the pots together at different heights, along with hanging baskets and you have layers that provide places for wildlife to hide. You will be surprised what visits. Add a water source of a shallow basin amongst the foliage and sit back and enjoy.

2. For larger spaces, the physical design elements you must be willing to accept include:

- Reduced grass areas: grassy understorey mowed very short with scattered trees, is not a suitable design for many wildlife species, especially small birds. It is a perfect habitat for aggressive, opportunistic birds such as noisy miners, butcherbirds and magpies.
- Logs, rocks, mulch and leaf litter: logs and large rocks can be used as lookouts and sunning points, while birds will search through the mulch and leaf litter for food.
- Water: a bird bath is a quick and easy way of bringing birds to you.
- Layers: Garden designs incorporating ground covers, bushes and trees, create numerous suitable places for wildlife to hide, feed and even breed. The shrubby layer provides shelter for the small wildlife species. Like the potted plants on the balconies, plants must overlap creating a bushy look.
- Prickly species and bushes growing low to the ground, provide shelter and protection for all wildlife species, especially the fairy wrens.
- Remove shiny things, hanging old pots, bright coloured ribbons – the objects often added to exclude birds from vegetable patches.

3. Common areas: Work along with others in your block of units and plant small shrubs, creepers up the walls and replace lawn with mulch, logs, and rocks.

Feels like:

The Australian bush provides surprises around every corner with different areas offering homes for the wildlife. Hence, creating a bushy, garden design that you feel relaxed and peaceful within is the answer. Create spaces in which family and guests will want to linger and you will find the wildlife will as well.

Sounds like:

Listen to your current garden space – does it have any clanging objects. These frighten our local wildlife. Thus if these are in your garden space at present, seriously consider removing them. A bird bath out of the reach of domestic animals will bring sounds of birds splashing, bathing and enjoying themselves. If your design is successful, birdsong is heard every day and invertebrates' sounds are heard in the evenings, especially.

Summary: No matter what type of garden space you have at present, you can attract wildlife to visit and perhaps reside.

Part two of 'How to develop a garden that will attract Wildlife' will be about Plant Species Selection in the next edition of the Barung newsletter.



*Include rocks, logs and mulch into your garden design
- Phillip and Nita C. Lester's garden at Mapleton.*

Landcare Week 2014: 1st - 7th September

by Jonathan Waites

For your edification, this year again, Barung offers several events during Landcare Week.

Monday 1st Sept 9 am - 12 noon - Creating Wildlife Habitat in Your Backyard: Join Susie Duncan as she demonstrates how to create a wildlife habitat in your own backyard by taking you on a tour through hers.

Tuesday 2nd Sept 9 am - 12 noon - Meet Barung: Come along and meet the people behind the activities (e.g. Nursery) and projects (e.g. Hinterland Bush Links) that Barung delivers. Hear a brief (five minute) synopsis about their area of expertise. At morning tea you'll have the opportunity to catch up with a presenter to find out more about what particularly interests you.

Wednesday 3rd Sept - Bird and Plant ID Walk at Flaxton: Kick off at 7am with a walk for a couple of hours with Eric Anderson and Diana O'Connor as they introduce you to some of the 100 odd bird species they have identified along this 3km stretch in Flaxton. This will be accompanied by a commentary on the vegetation which provides habitat for the birds (and other wildlife) along the way. Bring your binoculars, bird and plant ID books.

Thursday 4th Sept - Sunshine Coast Council's Conservation Partnerships: Sunshine Coast Council's Conservation Partnerships Officer, Nick Clancy, talks about the Land for Wildlife

Program, Voluntary Conservation Agreements and Landholder Environment Grants. Come along and find out more about these wonderful programs, supported by your Environment Levy, which could help you support and enhance the natural environment on your land.

Friday 5th Sept - Sunshine Coast Kids in Action Environmental Projects Day: Fuschia and I will be supporting this great Sunshine Coast Council initiative at a site on the coast. You too can volunteer to take part in an area of your interest. To find out more, go to: <http://www.sunshinecoast.qld.gov.au/sitePage.cfm?code=kia-get-involved>

Saturday 6th - Day Off

Sunday 7th Sept 8 - 10 am - Bushcare's Major Day Out: Meet the Russell Family Park community group. Learn about local native plants and some of our pesky weeds, while helping to create an informative rainforest walk by planting and weeding a small area of the park.

Please register for these events on the Barung website (www.barunglandcare.org.au) or phone the office (5494 3151). We need to know how many are coming so we make sure there are enough yum yums for smoko!

(continued from front page)

...First Walk on the Wild Side

Patron, Jill Morris, came along and awarded every 'WOWer' one of her beautiful books. The children were chuffed. One family already had copies of most of Jill's books and were very pleased to meet her in person. Jill and Richard have invited us to visit the Book Farm on one of our walks, which caused great excitement.

The July 5th walk to Mapleton Falls was equally as wonderful and those interested in the next one to Ewan Maddock Dam (*to be confirmed*) on August 2nd can call Raine on 0412031880 for details.

Each child 'Walking on the Wild Side' received a book from Maleny author and WOW Patron, Jill Morris.



No New Money for Landcare Groups

by Lucy Barbour, ABC Rural, Fri 30 May 2014

The Department of Agriculture has confirmed that it won't be allocating any new direct funding for community Landcare groups over the next four years.

In the Budget, the Federal Government slashed half a billion dollars from the National Landcare Program, while pledging more than \$500 million for its Green Army.

In Senate Estimates last night, a Department of Agriculture spokesman told Greens Senator, Rachel Siewert, that natural resource management bodies would receive funding, but Landcare groups would miss out. "There is no money for activities beyond those which are already contracted or committed...other than through regional bodies," he said.

"Sorry, I'm a little bit stunned that there's no money for actual Landcare projects," Senator Siewert responded.

Chairman of the National Landcare Network, David Walker, says some groups may be forced to shut down altogether. "I think devastation's probably pretty close to it," he said. "They feel as if they've been dumped and dumped on. "Landcare activities will certainly decrease and the interest in sustainable farming practices will be reduced."

Landcare Groups will have to apply for funding from their regional natural resource management bodies in future but they're also facing cuts and are expected to lose 20 per cent of their funding each year, for the next three years.

Chair of the Queensland Group of Natural Resource Management Collective, Mike Berwick, says the regional bodies will "get by".

"It'll cut us pretty dramatically and I think that yes, we understand the need for a Commission of Audit in looking at structural issues, but if this program is being cut on the basis of the advice coming from the Commission of Audit, we would argue that's incorrect advice and it needs to be addressed by Government and changed," he said.

"The next thing we need to do is say, 'well, if money's scarce, are you going to dishonour those commitments so you've got more



The Federal Government won't fund any new community Landcare grants over the next four years.

(Photo: Landcare Australia)

to spread around, or are you going to stick with those commitments and not have much left to spend for the next four years?

"So those are the kind of conversations we need to have with Government at a senior level, which we can then brief our regions on and hopefully if this is what we've got to live with, how can we best live with it, how can we design this to work for best for us and in the best interest of the landscape as a whole."

The Agriculture Minister Barnaby Joyce has defended the cuts and says Landcare will be better off under the new system.

"With the current projects that are already contracted within Landcare, with the resources available to maintain the Landcare structure, I think we have as good as one would expect in this current financial condition to continue helping people on the land and continue helping the environment," he said.

"I'm doing my very best to co-ordinate with the Department of Environment and Minister (Greg) Hunt to make sure that this process will continue on."

Minister Joyce hasn't confirmed whether new funding for Landcare grants will be available through the Department of Environment.

"I'm not going to start pre-empting where the finalisation of that agreement will lie when I haven't finalised the agreement," he said.

Landcare Australia, which works to raise awareness and non-government funding for the organisation, says it hasn't been affected by the Budget cuts.

Chainsaw Courses in August

Level 1 & 2 Chainsaw and ACDC (Agricultural Chemical Distributions Control) Courses at Barung Landcare are being held on Saturday 16th, Sunday 17th and Monday 18th August 2014. For prices and more information, email: info@barunglandcare.org.au or phone the Barung Office: 5494 3151.



New & Rejoining Members

Alan Karom
Alisha Ferguson
Alison Haly
Antonietta Rae
Barbara Taylor
Brigitte Mortimer
Chris Strewé
Fi Emberton
Geoff Saunders
Georgina Hale
Gordon & B Downing
Graham and Patricia Cranney



Jenny Power
Karen and Spencer Shaw
Karom Salt
Leo Petrie
Lyndal Charrington &
Scott Macintyre
Lynn Anderson
Neal McDonald
Peta Terry
Peter Pike
R & L Holden
Tony & Kathy Yorkston

Thank you to ...
Poet's Cafe
167 Main St, Montville
5478 5479
... for joining Barung as a Business Sponsor

Queensland Conference & Camping Centres

*Inspiring the next generation
with outdoor education*

www.qccc.com.au

MAPLETON
07 5456 3600

QCCC

Retirement - Queensland Style



Maleny Grove

... a Live Life Village

Award Winning design for
Today's Living with
Tomorrow's Needs
in mind.

Independence with Flexible
Supported Living Options

Call us today for FREE DVD and Information Pack

1300 55 65 75

9 Palm St, Maleny

LiveLifeVillages.com



Rob and Samantha Outridge

* FRUIT & VEGETABLES * DELICATESSEN * MEAT *

26 Maple Street, Maleny

Phone: (07) 5494 2257 Fax: (07) 5494 2767



Montville Mist

Still Spring Water

1800 001 102

www.montvillemist.com.au

Bottled at the Source

Barung Landcare Membership Rates and Benefits

Individual 1 yr/3 yrs \$ 35/ 90 pa

This entitles you to 2 free trees from the Nursery; 10% plant discount; discounts with participating local businesses; Wood Expo and workshops; rights to 1 vote at AGM and the quarterly *Barung News*, emailed to you; and the satisfaction of supporting/working with Barung Landcare to preserve and enhance the natural environment of the Blackall Range and environs.

Family 1 yr/3 yrs \$ 55/150 pa

As for Individual membership though 4 free trees and 2 votes at AGM per family.

Business \$100 pa

As for Individual membership though Wood Expo, Workshop discounts and AGM voting rights for 1 person only.

Community Group \$ 35 pa

As for Business membership though all trees at wholesale price - no free trees and business discounts for 1 person only.

Quandong Booyong \$1000 Life/\$350 4yrs

(See further details p. 5 New Membership structure effect. 14.8.14)



Hanson Construction Materials

**Best Rates & On Time Delivery
Crushed Rock, Sand, Aggregates, Gravel**

QUARRY: Mt Beerwah Rd, Glass House Mountains

(07) 5493 0111

www.hanson.com.au

profitable
sustainable
plantation
forests



www.hqplantations.com.au

COOEE

APPROVED PRODUCT 10078AP



**BFA
REGISTERED
PRODUCT**



100% Fairtrade Organic
What's the story in your cup?

Karen & Richard Barnett

07 5478 5585

montvillecoffee.com.au

info@montvillecoffee.com.au

Available in local stores and online



Cert. No. 4200P



FLO ID 3340

BUSINESS CONTRIBUTORS

Suncoast Hardwoods	Native Plants SEQ
South East Land Repair	Family FEASTival
eContent & Life Artistry	Habitat Support
Northey Street City Farm	Lapmism Pty Ltd
Ananda Marga River School	Earthcarer
Montville Village Real Estate	
RB Safety & Training Services P/L	
Range Auto & Fuel Injection Centre	

Barung gratefully acknowledges these organisations for their partnerships & support:



*Lake Baroon
Catchment Care
Group*



**Hinterland
Business
Centre**



This project was funded by the Queensland Government's Everyone's Environment grants program.



**Burnett Mary
Regional Group**
...for Natural Resource Management Inc



**Gambling
Community Benefit Fund**
Queensland Government

And also the Business Sponsors and Contributors whose advertisements appear in the Barung News.

THE BARUNG FAMILY

BARUNG 2013/14 VOLUNTARY MANAGEMENT COMMITTEE

President	<i>Eric Anderson</i>
Vice President	<i>Lindsay Kruger</i>
Secretary	<i>Dianne Clarke</i>
Treasurer	<i>Alan Harrington</i>
Committee Members	<i>Lin Fairlie</i>
	<i>Diana O'Connor</i>
	<i>Martina Gordon</i>
	<i>Ric Bastian</i>
	<i>Sue Brischke</i>

BARUNG STAFF

Barung Resource Centre & Projects

<i>Jonathan Waites</i>	Projects Officer
<i>Steve McLeish</i>	Barung Events
<i>Kellie Huddy</i>	Administration
<i>Den Lalor</i>	P/T Admin/Project Support Officer
<i>Robyn Harper</i>	Editor, <i>Barung News</i>

Barung Nurseries

<i>Wayne Webb</i>	Nursery Manager
<i>Fuschia Collard</i>	Assistant Nursery Manager

Barung Contracting Services

<i>Luke McWilliam</i>	Manager
<i>Brenton Schwab</i>	Team Leader
<i>Sarah Dickson</i>	Team Leader

Hinterland Bush Links

<i>Susie Duncan</i>	Coordinator
---------------------	-------------

**...And our many Volunteers, Labour Team Participants and Members
We respectfully acknowledge the traditional custodians of this land.**